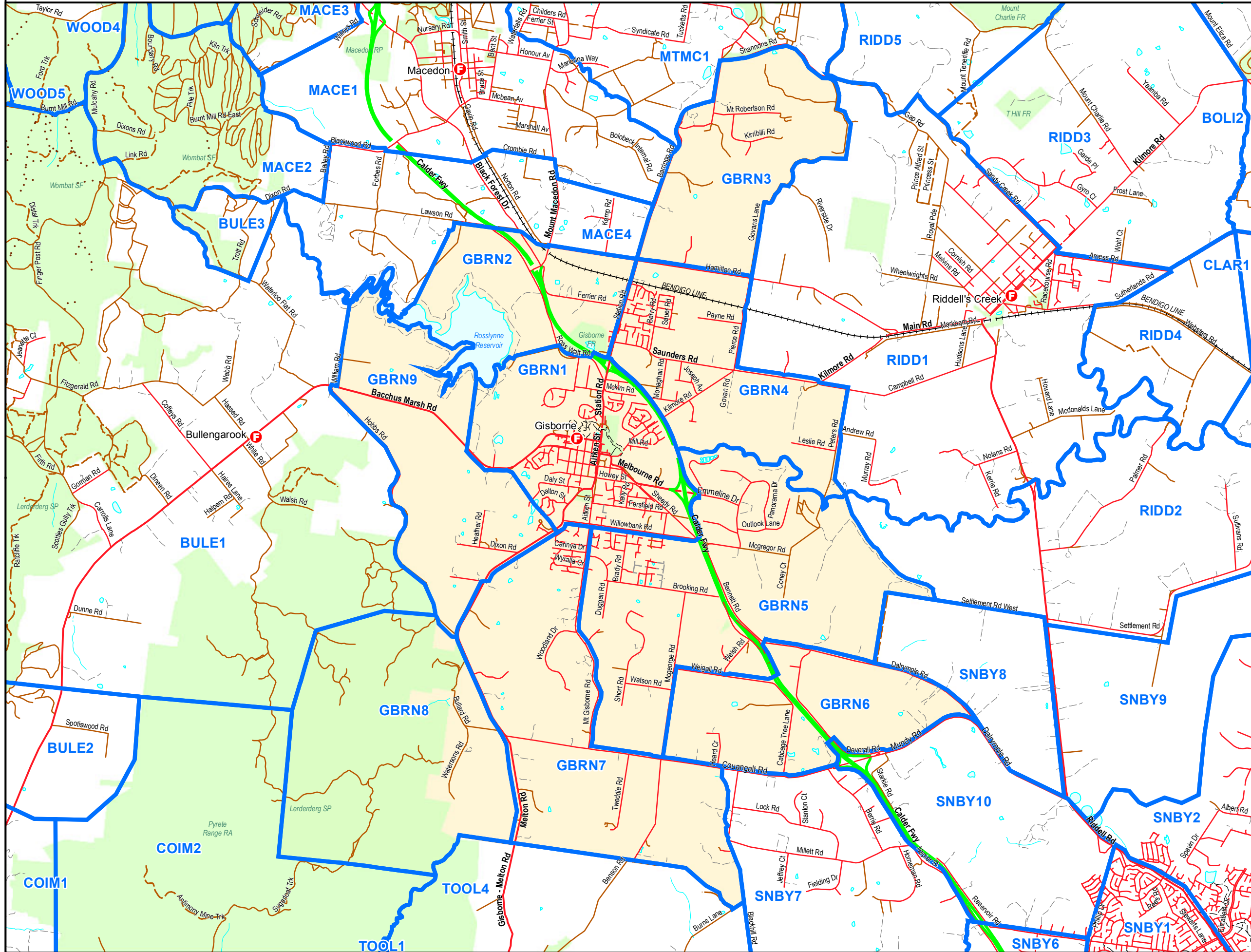


# GISBORNE Assignment Areas - ESTA Map 10



- ### Legend
- CFA Fire Station (Main)
  - CFA Fire Station (Satellite)
  - CFA Assignment Areas (ESTA 10)
  - Freeway
  - Highway
  - Arterial Sealed
  - Arterial Unsealed
  - Local UnSealed
  - Local Sealed
  - Road Private Access
  - Road 4WD
  - Road Permanently Closed
  - Walking or Bike Path
  - Road Proposed
  - Traffic Lights
  - Rail Operational
  - Rivers and Major Streams
  - Perennial Waterbody
  - Public Land
  - MFB Metropolitan District

## GBRN

This map displays ESTA 10 Assignment Areas. If changes are required to any Assignment Boundaries please send in a hard copy of this map to your District displaying the changes.

Please highlight the existing boundary to be changed and draw in the "new" boundary in a different colour.

All changes must be signed off by your District prior to submission to CAD support

Contact CAD Support if you have any further questions.

**(03) 9262 8494**

Disclaimer:  
This map is a snapshot generated from Victorian Government data as well as data from various other sources. This does not guarantee that the publication is without flaw of any kind or is wholly appropriate for your particular purposes and therefore disclaims all liability for error, loss or damage which may arise from reliance upon it. All persons accessing this information should make appropriate enquiries to assess the currency of the data.

